


# Chair Circuit Board Test Point Reference



For a list of test points and functions, see the page for your product's circuit board. Refer to the relevant A-dec service guide or service reference for additional information on troubleshooting, service, parts identification, maintenance, and more. Current revisions of A-dec support documents are available in the Document Library on [www.a-dec.com](http://www.a-dec.com).

---

 **ATTENTION** Circuit boards are sensitive to static electricity. Electrostatic Discharge (ESD) precautions are required when touching a circuit board or making connections to or from the circuit board. Circuit boards should be installed only by an electrician or qualified service person.

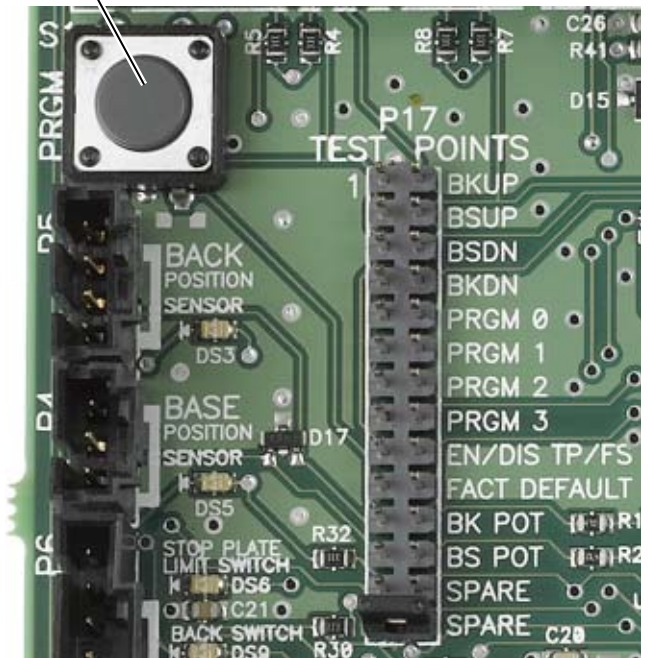
---

<b>A-dec 200, Performer, Decade, and Cascade Chair Circuit Board . . . . .</b>	<b>2</b>
<b>A-dec 311\411 Chair Circuit Board . . . . .</b>	<b>3</b>
<b>A-dec 511 Chair Circuit Board . . . . .</b>	<b>4</b>

## A-dec 200, Performer, Decade, and Cascade Chair Circuit Board

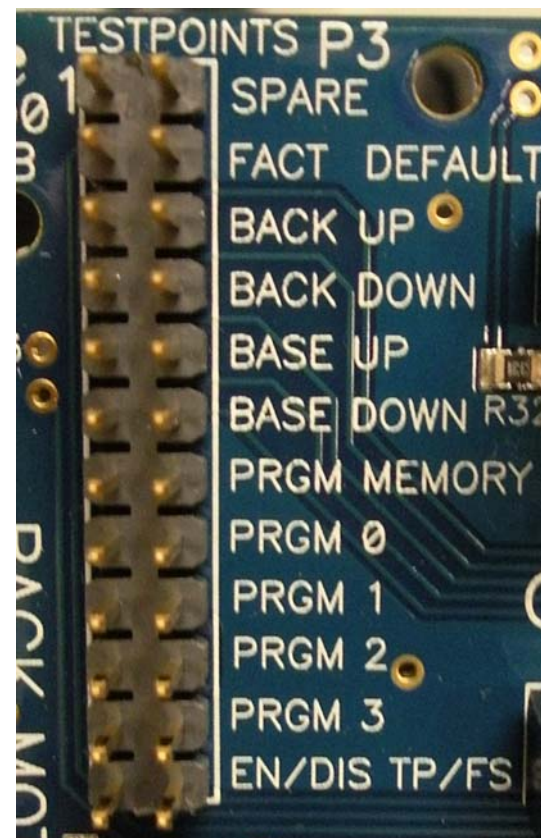
- **BKUP** – Raises the chair back.
- **BSUP** – Raises the chair base.
- **BSDN** – Lowers the chair base.
- **BKDN** – Lowers the chair back.
- **PRGM (button)** – To program chair positions, position the chair, press this button, you'll hear a single beep, then within three seconds put the jumper in one of the PRGM positions and you'll hear three beeps confirming the position is set.
- **PRGM 0** – Preset chair position 0, typically used for patient entry/exit position.
- **PRGM 1** – Preset chair position 1, typically used for patient supine position.
- **PRGM 2** – Preset chair position 2, typically used for patient supine position.
- **PRGM 3** – Preset chair position 3, typically used to move the back to the x-ray/rinse position. Remove the jumper and replace it to return the chair to its original position.
- **EN/DIS TP/FS** – **Note:** This position does not function on boards manufactured before 6/2005. To enable/disable the Program and Preset touchpad/foot switch buttons, place the jumper in this position, then press and hold the button to be enabled/disabled. Three beeps signals the button is enabled. One beep signals the button is disabled.
- **FACT DEFAULT** – Resets the chair presets to factory settings.
- **BK POT** – To verify the Back Position potentiometer voltage, place a voltage meter's positive lead on the left pin of the BK POT test point and the negative lead on the left pin of a SPARE test point.
- **BS POT** – To verify the Base Position potentiometer voltage, place a voltage meter's positive lead on the left pin of the BS POT test point and the negative lead on the left pin of a SPARE test point.
- **SPARE** – Inactive position for jumper storage.
- **SPARE** – Inactive position for jumper storage.

PRGM Button



## A-dec 311\411 Chair Circuit Board

- **SPARE** - Inactive position for jumper storage.
- **FACT DEFAULT** - Resets the chair presets to factory settings.
- **BACK UP** - Raises the chair back.
- **BACK DOWN** - Lowers the chair back.
- **BASE UP** - Raises the chair base.
- **BASE DOWN** - Lowers the chair base.
- **PRGM MEMORY** - To program chair positions, position the chair, place the jumper in this position you'll hear a single beep, then put the jumper in one of the PRGM positions and you'll hear three beeps confirming the position is set.
- **PRGM 0** - Preset chair position 0, typically used for patient entry/exit position.
- **PRGM 1** - Preset chair position 1, typically used for patient supine position.
- **PRGM 2** - Preset chair position 2, typically used for patient supine position.
- **PRGM 3** - Preset chair position 3, typically used to move the back to the x-ray/rinse position. Remove the jumper and replace it to return the chair to its original position.
- **EN/DIS TP/FS** - **Note:** This position does not function on boards manufactured before 6/2005. Use to enable/disable the Program and Preset touchpad/foot switch buttons or to manage soft base limits.
  - **Disable/Enable Buttons** - Place the jumper in this position, then press and hold the touch pad/foot switch button to be enabled/disabled. Three beeps signals the button is enabled. One beep signals the button is disabled.
  - **Set Soft Base Limit** - Position the chair, place the jumper in this position, press and hold BASE UP or BASE DOWN until you hear three beeps.
  - **Delete Soft Base Limit** - Place the jumper in this position, press and hold BASE UP or BASE DOWN until you hear one beep that signals the setting has been disabled.
  - **Change Soft Base Limit** - Delete the limit, then reset.



## A-dec 511 Chair Circuit Board

- **SPARE** – Inactive position for jumper storage.
- **FACT DEFAULT** – Resets the chair presets to factory settings.
- **BACK UP** – Raises the chair back.
- **BACK DN** – Lowers the chair back.
- **BASE UP** – Raises the chair base.
- **BASE DN** – Lowers the chair base.
- **PROGRAM** – To program chair positions, position the chair, place the jumper in this position you'll hear a single beep, then put the jumper in one of the PRGM positions and you'll hear three beeps confirming the position is set.
- **PRGM 0** – Preset chair position 0, typically used for patient entry/exit position.
- **PRGM 1** – Preset chair position 1, typically used for patient supine position.
- **PRGM 2** – Preset chair position 2, typically used for patient supine position.
- **PRGM 3** – Preset chair position 3, typically used to move the back to the x-ray/rinse position. Remove the jumper and replace it to return the chair to its original position.
- **EN/DIS TP/FS** – **Note:** This position does not function on boards manufactured before 6/2005. Use this position to enable/disable the Program or Preset touchpad/foot switch buttons or to manage soft base limits.
  - **Disable/Enable Buttons** – Place the jumper in this position, then press and hold the touch pad/foot switch button to be enabled/disabled. Three beeps signals the button is enabled. One beep signals the button is disabled.
  - **Set Soft Base Limit** – Position the chair, place the jumper in this position, press and hold BASE UP or BASE DN until you hear three beeps.
  - **Delete Soft Base Limit** – Place the jumper in this position, press and hold BASE UP or BASE DN until you hear one beep that signals the setting has been disabled.
  - **Change Soft Base Limit** – Delete the limit, then reset.

